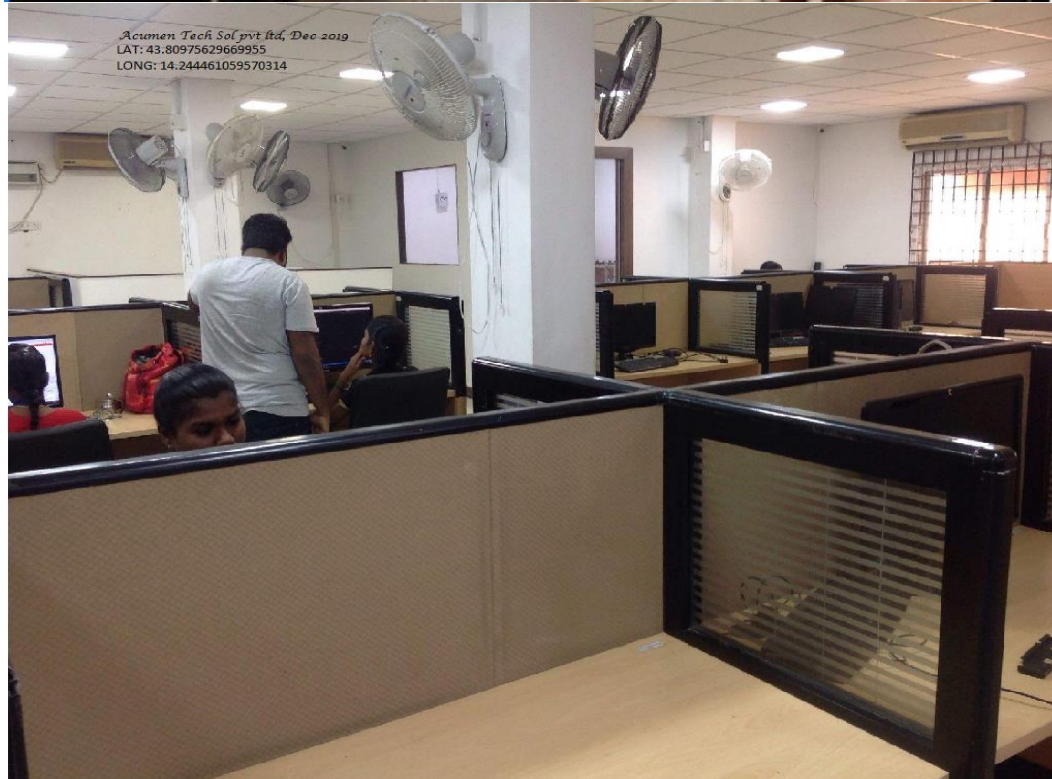


1.3.3_4 Geo-tagged photographs with caption and date

EXTC



ANZ Bangalore, July 2020

LAT: 13.04643635

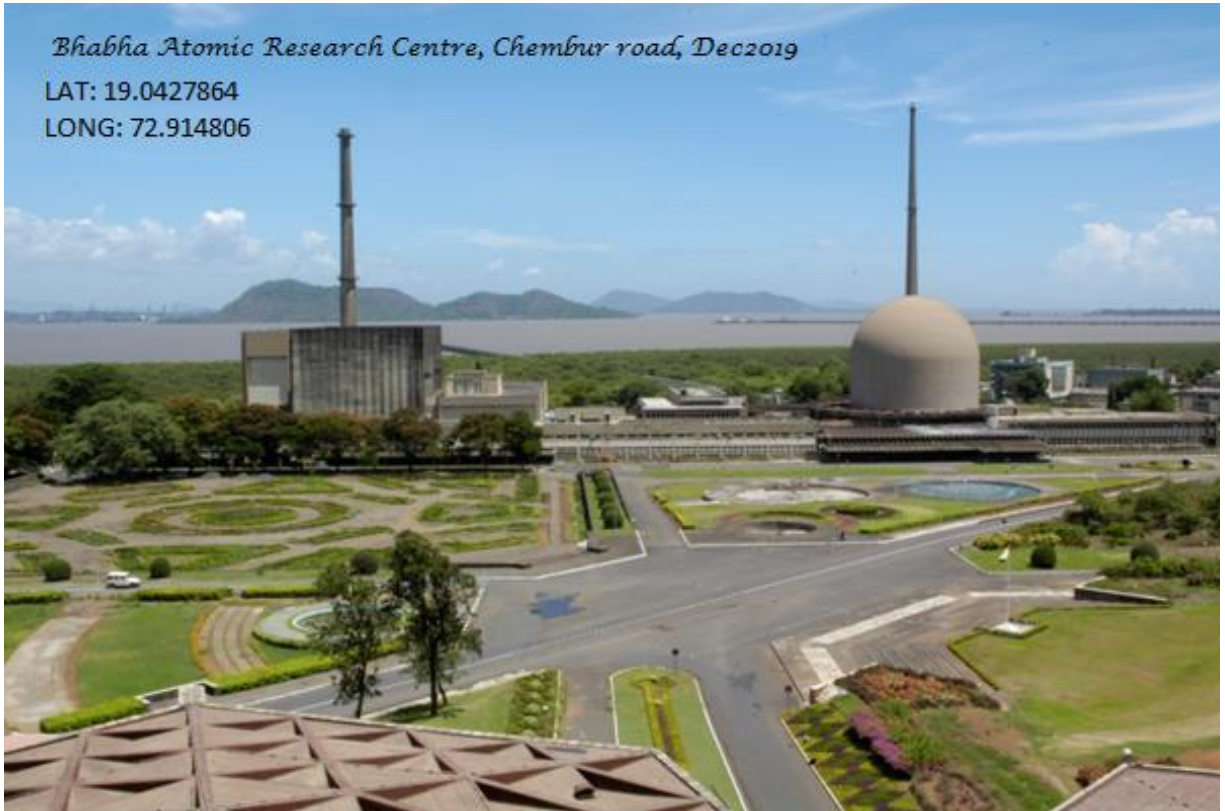
LONG: 77.62155050444476



Bhabha Atomic Research Centre, Chembur road, Dec2019

LAT: 19.0427864

LONG: 72.914806



BSNL, Thane, Dec 2019

19.230978410776448,

72.94847748391756

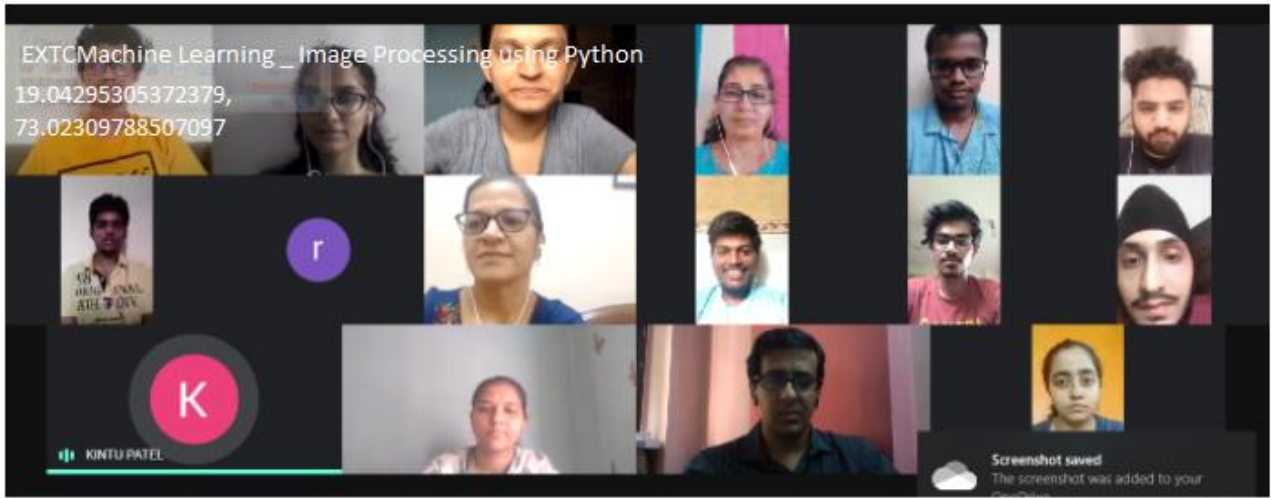


*Dezignolics software
company, Dec 2019*

19.1873154782442,

72.97070286761124





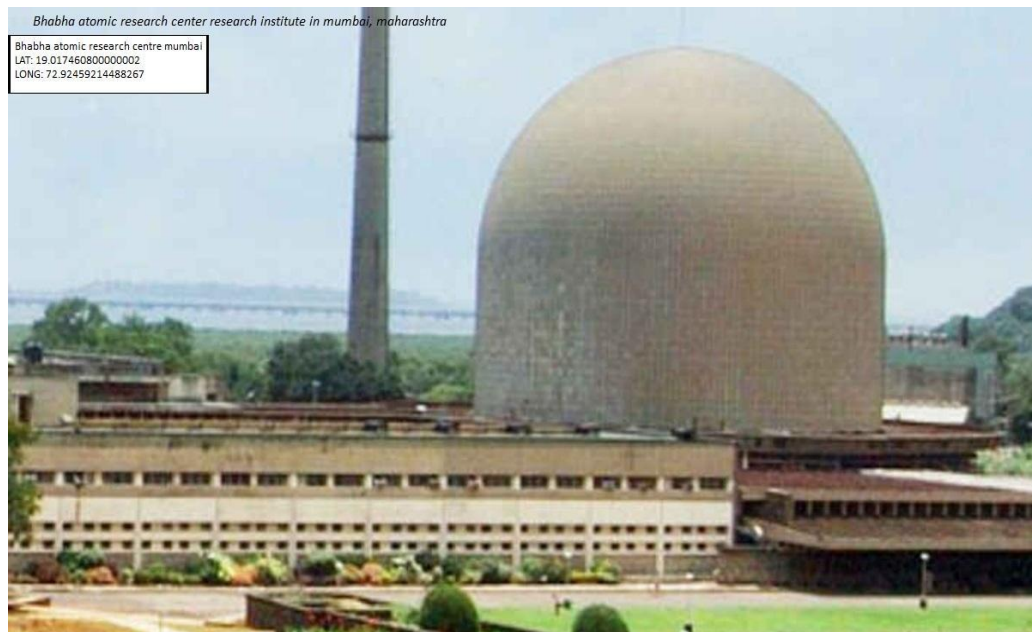
L&T electrical and automation mahape road_dec 2019
19.11368653444802,
73.0184374252813







Computer Engineering



Indian Oil Corporation Limited



Indian Oil Corporation Limited, bandra,
Mumbai
LAT: 19.067115
LONG: 72.8657245

JP Morgan India Services Pvt Ltd, Malad West, Mumbai



JP Morgan India Services
Pvt Ltd
LAT: 19.171523999999998
LONG: 72.83323162658148



Outrider Tech Private Limited
LAT: 19.1943294
LONG: 72.9701779

OUTRIDER

OUT OF HARM'S WAY

Information Technology

SIESGST NERUL

Latitude 19; 2; 1.00247999999554693
Longitude 73; 1; 5.30246973363683



NIC Jan 2020

Latitude 19: 4: 33.5636400080111486

Longitude 72: 52: 38.6140797286063275



Reliance Industries LTD. Dec 2019

Latitude 19: 4: 33.5636400080111486

Longitude 72: 52: 38.6140797286063275



IIT Bombay Jan 2019
Latitude 19: 7: 57.4267799352819353
Longitude 72: 54: 53.9248511904733618



IIT BOMBAY JUNE 2019

Data Bytes Systems and Services Aug 2018
Latitude 19: 4: 33.5636400080111486
Longitude 72: 52: 38.6140797286063275





BARC Mumbai July 2019

LAT: 19.0433282999861

LONG: 72.9143852984556



Printing and Packaging Technology



Criteria 1.3.2_Industrial
Visit_Flueron Inks_
latitude:19.1154380856085
longitude:73.02305874661945

Criteria 1.3.2_Industrial Visits_ SMI Coated Products:
Latitude:19.179021200897296
Longitude: 73.1864510983748



Criteria 1.3.2_Industrial
Visit_TOI_
Latitude:19.15879°N
Longitude:72.99934°E

Mechanical Engineering

PRISM JOHNSON LIMITED

[Home](#) [About](#) [Contact Us](#)

Search Website

[About Us](#) [Divisions](#) [Core Values](#) [Investors](#) [Contact Us](#)

PRISM CEMENT LIMITED IS NOW **PRISM JOHNSON LIMITED**

Prism Johnson Limited Dec 2019

GPS
Latitude 19: 4: 37.6498199944617085
Longitude 72: 49: 58.6183800622819717
...

Sunday, June 6, 2021 12:49:04 IST

[Skip to Main Content](#)

Font Size [A+](#) [A](#) [A-](#)



Central Railway



Search :



[हिन्दी](#)



[About Us](#) [Tenders & Suppliers Info](#) [News & Recruitment](#) [Public Information](#) [Passenger Information](#) [Contact Us](#)

Home

About Us

- > Head Quarter
- > Mechanical
- > Workshops
- > Matunga
- » About us
- » Rajbhasha
- » Organisation Chart
- » Tender Awarded
- » Parel
- » Kurduwadi

[Bookmark](#)

[Mail this page](#)

[Print this page](#)

QUICK LINKS

[Select](#)

Matunga

Centrail Railway Dec 2019

About us

GPS
Latitude 19: 1: 43.0370399999956206
Longitude 72: 50: 50.2638001161976433

BRIEF

Carriage Workshop, Matunga was set up in 1915 as a repair workshop for broad gauge and narrow gauge coaches and wagons of the erstwhile Great Indian Peninsula (GIP) Railway. The workshop covers a triangular piece of land/area of 85 Acres, including a covered area of about 35 Acres, skirted by the Central Railway suburban corridors on the east and the Western Railway corridors on the west.

The workshop capacity has since been expanded and developed and over a period of time the target outturn of the workshop has been increased to the current level of 149 Non-AC Coaches, 36 AC Coaches POH, 7.5 LHB and 99 EMU Coaches POH per month. LHB coaches schedule maintenance is started in Matunga Workshop since December `2018. Matunga Workshop is proud of becoming the first Railway Workshop to start the industrial use of CNG since March `2017. Matunga Workshop is certified with ISO 50001, ISO 3834, 5 S, Green Co-Rating Certification and NABL (ISO/IES 17205:2005) Certification.

Matunga Workshop is headed by Chief Workshop Manager and is assisted by five 1A Grade officers of Mechanical Electrical



Metalemms Bombay Private Limited

मेटलम्स बॉम्बे प्राइवेट लिमिटेड

5.0 ★★★★★ 5 reviews

Manufacturer

Metalemms bombay pvt ltd

Jun 2019

GPS

Latitude

19; 11; 55.6609195402270274

Longitude

72; 57; 16.7263200322632599



Save power convert your AODD to Electrical Diaphragm Pump

Mandar Pumps and Engg co Dec 2019

GPS	
Latitude	19: 12: 27.8733599543630106
Longitude	72: 57: 12.4920000000275877



Search:



हिन्दी



Home

- About Us
 - > Head Quarter
 - > Mechanical
 - > Workshops
 - > Parel
- >> Matunga
- >> Kurduwadi

[Bookmark](#) |
 [Mail this page](#) |
 [Print this page](#)

QUICK LINKS

Parel

Mechanical Department - Parel Workshop

The Central Railway Locomotive Workshop, Parel was set up by Great Indian Peninsular Railway as a Steam Loco Shed in 1879. Later repair and overhauling of Steam loco had started, and that had reached peak capacity of 32 Steam locos per month in 1962-63. With tapering of Steam traction, the Shop was upgraded to take up the work of Repair and Overhauling of Diesel locomotives from 1974-75 onwards.

It is one of the largest and oldest repair Workshops on the Indian Railways with diversified repair/manufacturing activities. Being located in the heart of Mumbai, it has ready access to road, sea and air transport. The Parel Workshop has the unique distinction of rendering services to the Armed Forces during the World Wars.



Central Railway Loco workshop Dec 2019

GPS	
Latitude	19: 0: 6.70428000000538216
Longitude	72: 50: 12.2935199819622198



Search :



हिन्दी



- About Us
- Tenders & Suppliers Info
- News & Recruitment
- Public Information
- Passenger Information
- Contact Us

- Home
- About Us
 - > Head Quarter
 - > Mechanical
 - > Workshops
 - > Parel
 - >> Matunga
 - >> Kurduwadi

- Bookmark
- Mail this page
- Print this page

QUICK LINKS
Select

Parel

Mechanical Department - Parel Workshop

The Central Railway Locomotive Workshop, Parel was set up by Great Indian Peninsular Railway as a Steam Loco Shed in 1879. Later repair and overhauling of Steam loco had started, and that had reached peak capacity of 32 Steam locos per month in 1962-63. With tapering of Steam traction, the Shop was upgraded to take up the work of Repair and Overhauling of Diesel locomotives from 1974-75 onwards.

It is one of the largest and oldest repair Workshops on the Indian Railways with diversified repair/manufacturing activities. Being located in the heart of Mumbai, it has ready access to road, sea and air transport. The Parel Workshop has the unique distinction of rendering services to the Armed Forces during the World Wars.



Central Railway Loco workshop Dec 2019

GPS

Latitude

19: 0: 6.70428000000538216

Longitude

72: 50: 12.2935199819622198



Samiri Equipment & Engineers Private Limited

Directions

Save

Call

5.0 ★★★★★ 2 Google reviews

Electronics manufacturer in Thane, India

Address: SG Barve Road, Rd Number 12, Wagle Estate, Ambika Nagar No 3, Thane West, Thane, Maharashtra 400604, India

Phone: +91 95948 48652

[Suggest an edit](#) · [Own this business?](#)

Samiri Equipments & Engg Dec 2019

GPS

Latitude

19; 14: 30.1336800244752

Longitude

73; 1: 52.73580034420592



Central Railway



Search :



[हिन्दी](#)



- [About Us](#)
- [Tenders & Suppliers Info](#)
- [News & Recruitment](#)
- [Public Information](#)
- [Passenger Information](#)
- [Contact Us](#)

Home

About Us

- > [Head Quarter](#)
- > [Mechanical](#)
- > [Workshops](#)
- > [Parel](#)

- » [Matunga](#)
- » [Kurduwadi](#)

[Bookmark](#)
[Mail this page](#)
[Print this page](#)


QUICK LINKS

Parel

Mechanical Department - Parel Workshop

The Central Railway Locomotive Workshop, Parel was set up by Great Indian Peninsular Railway as a Steam Loco Shed in 1879. Later repair and overhauling of Steam loco had started, and that had reached peak capacity of 32 Steam locos per month in 1962-63. With tapering of Steam traction, the Shop was upgraded to take up the work of Repair and Overhauling of Diesel locomotives from 1974-75 onwards.

It is one of the largest and oldest repair Workshops on the Indian Railways with diversified repair/manufacturing activities. Being located in the heart of Mumbai, it has ready access to road, sea and air transport. The Parel Workshop has the unique distinction of rendering services to the Armed Forces during the World Wars.



Central Railway Loco workshop Dec 2019

GPS	
Latitude	19: 0: 6.70428000000538216
Longitude	72: 50: 12.2935199819622198

Vitarag Foundry Works

Pune, Maharashtra | GST 27ABJPR3249L1Z3 | [Verified Supplier](#)

[View Mobile Number](#)

- [Home](#)
 - [Products & Services](#)
 - [Profile](#)**
 - [Contact Us](#)
- [Send Email](#)

Products & Services

- New Items**
- Lead Alloys Casting
 - Sand Moulding
 - Gravity Die Development
 - Chrome Plating Anodes
 - Zinc Alloys Casting
 - Alluminium Alloys Casting
 - Gravity Die Casting
 - Aluminium Anodes
 - Zinc Anodes

Vitarag Foundry Works

Incepted in the year 1997, we are a professionally managed organization, engaged in the manufacture and supply of high tensile strength die casted alloys and components. Our product range comprises of Zinc Alloy Castings, Aluminum Alloy Castings, Lead Alloy Castings, Sand Molding and Chrome Plating Anodes. Ever since inception, our qualitative range of products have been serving the demands of many industries, within stipulated frame of time. Our expertise in the gravity die casting process enables us in the production of an accurately dimensioned, sharply defined, smooth and textured-surface metal, which stands high on quality front. Under the able guidance of Mr Amol Manikchand Rokde, we have grown and developed our expertise in the domain. Our founder has extensive industry experience as he is a metallurgist from a government college of engineering Pune. An ex-council member of I.I.F Pune, he was visiting lecturer at government polytechnic Pune for the year 1996 to 1998.

Vitarang Foundry work Dec 2019

GPS	
Latitude	18: 31: 13.5940799999953299
Longitude	73: 51: 24.6265199760238574



Search :



[हिन्दी](#)



- About Us
- Tenders & Suppliers Info
- News & Recruitment
- Public Information
- Passenger Information
- Contact Us

- Home
- About Us
 - > Head Quarter
 - > Mechanical
 - > Workshops
 - > Matunga
 - » About us
 - » Rajbhasha
 - » Organisation Chart
 - » Tender Awarded
 - » Parel
 - » Kurduwadi

- Bookmark
- Mail this page
- Print this page

QUICK LINKS
Select

Matunga

Centrail Railway Dec 2019

About us

BRIEF

Carriage Workshop, Matunga was set up in 1915 as a repair workshop for broad gauge and narrow gauge coaches and wagons of the erstwhile Great Indian Peninsula (GIP) Railway. The workshop covers a triangular piece of land/area of 85 Acres, including a covered area of about 35 Acres, skirted by the Central Railway suburban corridors on the east and the Western Railway corridors on the west.

The workshop capacity has since been expanded and developed and over a period of time the target outturn of the workshop has been increased to the current level of 149 Non-AC Coaches, 36 AC Coaches POH, 7.5 LHB and 99 EMU Coaches POH per month. LHB coaches schedule maintenance is started in Matunga Workshop since December`2018. Matunga Workshop is proud of becoming the first Railway Workshop to start the industrial use of CNG since March`2017. Matunga Workshop is certified with ISO 50001, ISO 3834, 5 S, Green Co-Rating Certification and NABL (ISO/IES 17205:2005) Certification.

Matunga Workshop is headed by Chief Workshop Manager and is assisted by five TA Grade officers of Mechanical Electrical

GPS	
Latitude	19: 1: 43.03703999999956206
Longitude	72: 50: 50.2638001161976433



Search :



[हिन्दी](#)



- About Us
- Tenders & Suppliers Info
- News & Recruitment
- Public Information
- Passenger Information
- Contact Us

- Home
- About Us
 - > Head Quarter
 - > Mechanical
 - > Workshops
 - > Matunga
 - » About us
 - » Rajbhasha
 - » Organisation Chart
 - » Tender Awarded
 - » Parel
 - » Kurduwadi

- Bookmark
- Mail this page
- Print this page

QUICK LINKS
Select

Matunga

Centrail Railway Dec 2019

About us

BRIEF

Carriage Workshop, Matunga was set up in 1915 as a repair workshop for broad gauge and narrow gauge coaches and wagons of the erstwhile Great Indian Peninsula (GIP) Railway. The workshop covers a triangular piece of land/area of 85 Acres, including a covered area of about 35 Acres, skirted by the Central Railway suburban corridors on the east and the Western Railway corridors on the west.

The workshop capacity has since been expanded and developed and over a period of time the target outturn of the workshop has been increased to the current level of 149 Non-AC Coaches, 36 AC Coaches POH, 7.5 LHB and 99 EMU Coaches POH per month. LHB coaches schedule maintenance is started in Matunga Workshop since December`2018. Matunga Workshop is proud of becoming the first Railway Workshop to start the industrial use of CNG since March`2017. Matunga Workshop is certified with ISO 50001, ISO 3834, 5 S, Green Co-Rating Certification and NABL (ISO/IES 17205:2005) Certification.

Matunga Workshop is headed by Chief Workshop Manager and is assisted by five TA Grade officers of Mechanical Electrical

GPS	
Latitude	19: 1: 43.03703999999956206
Longitude	72: 50: 50.2638001161976433



राष्ट्रीय केमिकल्स एण्ड फर्टिलाइजर्स लिमिटेड Rashtriya Chemicals and Fertilizers Limited



What's New

- JUN 05** Recruitment for the post of Operator Grade I (Chemical) - Grade A8 **New**
- MAY 29** RCF's reports highest ever PBT of Rs. 516.17 crore in 2020-21 **New**
- MAY 27** Audited Financial Results (Standalone and Consolidated) as on 31.03.2021 **New**

Our Inspirations



Shri. Narendra Modi
Hon'ble Prime Minister



Shri D.V. Sadananda Gowda
Hon'ble Minister of Chemicals & Fertilizers

Our Products



Chemicals & Fertilizer Ltd Dec 2019

GPS	
Latitude	19.5, 14.8408800204633994
Longitude	73.9, 44.2515600624028238



ADMISSIONS OPEN FOR ENGINEERING A.Y. 2020-21

SVKM's Institute of Technology April 2020

GPS	
Latitude	20.52, 24.2443199502012874
Longitude	74.46, 10.104600000205538



Manibhadra Machine Tools Pvt. Ltd.

[Website](#) [Directions](#) [Save](#) [Call](#)

4.7 ★★★★★ 3 Google reviews

Fabrication engineer in Thane, India

Address: Police Station, Plot No. B-48/2, Road No. 30-A, Near, Wagle Industrial Estate, Thane, Maharashtra 400604, India

Phone: +91 22 2580 3000

Manibhadra Machine Tools PVT - Dec 2019

GPS

Latitude	19: 12: 6.65963998105141286
Longitude	72: 57: 19.1890798786769778

Maruti Suzuki ARENA (Prakash Auto, Ulhasnagar, Vithalwadi Station Road)



Directions

Save

Call

3.5 ★★★★★ 845 Google reviews

Car dealer in Ulhasnagar, India

Address: Plot No. 3, Railway Station Rd, Vitthalwadi, Ulhasnagar, Maharashtra 421003, India

Departments: Arena Ulhasnagar (Prakash Auto Pvt. Ltd) - Maruti

Hours: Open · Closes 7:30PM ▾

Service options: In-store shopping

Phone: +91 22 6232 8142

[Suggest an edit](#) · [Own this business?](#)

[Add missing information](#)

[Add website](#)

Maruti Suzuki Arena Dec 2019

GPS

Latitude	19: 13: 40.0151999999944152
Longitude	73: 9: 5.21747999370568

Know this place? [Share the latest info](#)

Absolute Engineers



- Website
- Directions
- Save
- Call

Manufacturer in Bhiwandi, India

Address: Bulding A8, Kripa Industrial Estate, Sonale, Bhadwad Gaon, Sonale Village, Bhiwandi, Maharashtra 421302, India

Phone: +91 98194 71236

[Suggest an edit](#) · [Own this business?](#)

Add missing information

[Add business hours](#)

Know this place? [Share the latest info](#)

Questions & answers

[Be the first to ask a question](#)

[Ask a question](#)

Absolute Engineers June 2019

GPS

Latitude

19; 17; 10.0985999999975462

Longitude

73; 5; 50.3246402877848453



राष्ट्रीय केमिकल्स एण्ड फर्टिलाइज़र्स लिमिटेड
Rashtriya Chemicals and Fertilizers Limited



What's New

- JUN 05** Recruitment for the post of Operator Grade I (Chemical) - Grade A8 [New](#)
- MAY 29** RCF's reports highest ever PBT of Rs. 516.17 crore in 2020-21 [New](#)
- MAY 27** Audited Financial Results (Standalone and Consolidated) as on 31.03.2021 [New](#)

Our Inspirations

-  **Shri. Narendra Modi**
Hon'ble Prime Minister
-  **Shri D.V. Sadananda Gowda**
Hon'ble Minister of Chemicals & Fertilizers

Our Products



Chemicals & Fertilizer Ltd Dec 2019

GPS

Latitude

19; 5; 14.8408800204633904

Longitude

73; 9; 44.2515600624028238

SIES Graduate School of Technology
 Affiliated to the University of Mumbai | AICTE Approved | NAAC Accredited.



SIES GST Dec 2019

GPS	
Latitude	19.2.34
Longitude	73.1.15
Altitude	0

Sunday, June 6, 2021 13:01:03 IST

[Skip to Main Content](#)

Font Size **A+** **A** **A-**



Central Railway



Search :



हिन्दी



- [About Us](#)
- [Tenders & Suppliers Info](#)
- [News & Recruitment](#)
- [Public Information](#)
- [Passenger Information](#)
- [Contact Us](#)

Home

- About Us**
 - > Head Quarter
 - > Mechanical
 - > Workshops
 - > Parel
- > Matunga
- > Kurduwadi

Bookmark
 Mail this page
 Print this page

QUICK LINKS

Parel

Mechanical Department - Parel Workshop

The Central Railway Locomotive Workshop, Parel was set up by Great Indian Peninsular Railway as a Steam Loco Shed in 1879. Later repair and overhauling of Steam loco had started, and that had reached peak capacity of 32 Steam locos per month in 1962-63. With tapering of Steam traction, the Shop was upgraded to take up the work of Repair and Overhauling of Diesel locomotives from 1974-75 onwards.

It is one of the largest and oldest repair Workshops on the Indian Railways with diversified repair/manufacturing activities. Being located in the heart of Mumbai, it has ready access to road, sea and air transport. The Parel Workshop has the unique distinction of rendering services to the Armed Forces during the World Wars.



**Central Railway
 Loco workshop
 Dec 2019**

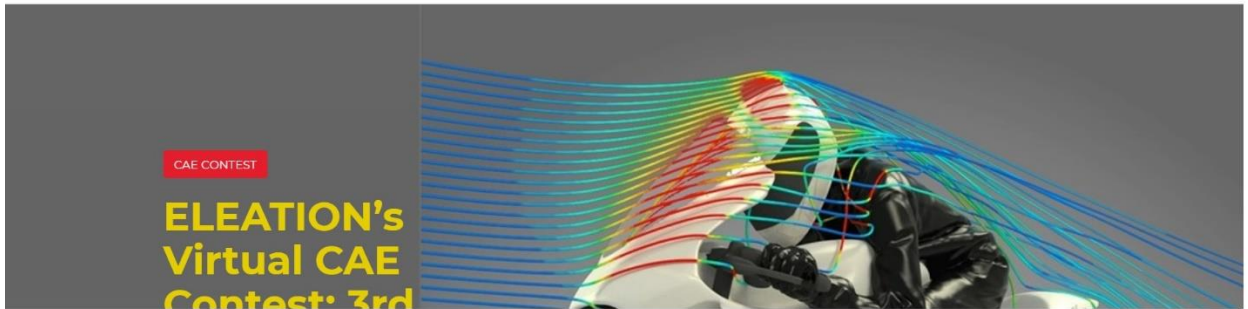
GPS	
Latitude	19. 0. 6.70428000000538216
Longitude	72. 50. 12.2935199819622198

SIES Graduate School of Technology
Affiliated to the University of Mumbai | AICTE Approved | NAAC Accredited.



SIES GST Dec 2019

GPS	
Latitude	19.2, 34
Longitude	73.1, 15
Altitude	0



Election - July 2019

GPS	
Latitude	18.30, 55.5544800198550346
Longitude	73.46, 42.7745995423172042



Tech Mech Engineers



Website

Directions

Save

Call

4.3 ★★★★★ 12 Google reviews

Industrial consultant in Thane, India

Address: A-277, Road Number 16A, Thane, Maharashtra 400604, India

Hours: Open · Closes 5:30PM ▾

Phone: +91 22 2582 7883

[Suggest an edit](#) · [Own this business?](#)

Know this place? [Share the latest info](#)

Tech Mech Engineers Dec 2019

GPS

Latitude	19; 11; 59.6367601246165435
Longitude	72; 57; 18.1843198338758327



GROWTH. INNOVATION. LEADERSHIP.
32 YEARS OF DRIVING ECONOMIC GROWTH

Latest News JNPT successfully registered a throughput of 454385 TEUs in container handling in the month of May 2021

Jawaharlal Nehru Port Trust - Dec 2019

GPS

Latitude	18; 57; 5.9446799919240334
Longitude	72; 57; 1.8043199999955615



Samiri Equipment & Engineers Private Limited

[Directions](#)
[Save](#)
[Call](#)

5.0 ★★★★★ 2 Google reviews

Electronics manufacturer in Thane, India

Address: SG Barve Road, Rd Number 12, Wagle Estate, Ambika Nagar No 3, Thane West, Thane, Maharashtra 400604, India

Phone: +91 95948 48652

[Suggest an edit](#) · [Own this business?](#)

Samiri Equipments & Engg Dec 2019

GPS

Latitude	19; 11; 33.2034001214342922
Longitude	72; 57; 19.4306398879271569

[Screen Reader Access](#) | [Skip to Main Content](#)

राष्ट्रीय केमिकल्स एण्ड फर्टिलाइजर्स लिमिटेड
 Rashtriya Chemicals and Fertilizers Limited

HOME
ABOUT US
PRODUCTS
HR
VIGILANCE
TENDER
INVESTOR RELATION
SOCIAL RESPONSIBILITY
KISAN MANCH
PORTALS
CONTACT

What's New

- JUN 05

Recruitment for the post of Operator Grade I (Chemical) - Grade A8 New
- MAY 29

RCF's reports highest ever PBT of Rs. 516.17 crore in 2020-21 New
- MAY 27

Audited Financial Results (Standalone and Consolidated) as on 31.03.2021 New

Our Inspirations

Shri. Narendra Modi
Hon'ble Prime Minister

Shri D.V. Sadananda Gowda
Hon'ble Minister of Chemicals & Fertilizers

Our Products

Rashtriya Chemicals & Fertilizer Ltd Nov 2019

GPS	
Latitude	19; 5; 14.840900204633894
Longitude	73; 9; 44.2515600624028238

Kirloskar Oil Engines Limited



Enriching Lives

Other engine equipment manufacturing company

Kirloskar Oil Engines Limited (KOEL) is the leading manufacturer of Diesel **engines** and Generating Sets for all residential and commercial usage. We are also in Fire fighting **Engines** along with pioneer in Agricultural Solutions.

in.linkedin.com › company › kirloskar-oil-engines-ltd
Kirloskar Oil Engines Limited | LinkedIn



kirloskar.com

Kirlosker oil Engine ltd - Jun2019

GPS

Latitude	16; 36; 42.3700000000026478
Longitude	74; 21; 51.5499999999982874
Altitude	0